



# SCREENS



4-13	BORDER
14-23	DOLLY
24-29	WEDGE
30-37	ORIGIN+
38-43	VIEW
44-47	F50
48-51	1 & 2 SERIES

**Warranty** - All screens have a 5 year guarantee against defects providing that the product has only been subjected to normal wear and tear and has not been misused or abused. Fabrics are excluded, please see manufacturer for their guarantee.



**Flexibility** - All screens can be manufactured to a variety of shapes or sizes allowing you full adaptability. The images shown here are examples of what can be created.



**Finishes** - Border, Origin+, View and F50 can be manufactured with many panel finishes including fabric, glazing and dry wipe board.



**Magnetic** - Border, Origin+, View and F50 can be manufactured with several different magnetic panel finishes, including magnetic wipe boards and steel mesh creating added value within the product.



**Pinnable** - Border, Origin+ and View can be manufactured with a pinnable face on both sides of the screen creating added value within the product.



**Power** - F50 panels can be fitted with a range of power, data and charge solutions to enhance working areas. All cabling is hidden within the product.



Introducing **BORDER....**



....Rectilinear minimalist design



**BORDER**

- 30mm thick aluminium framed screen
- Quad top toolrail available
- Frame colour available in white or silver



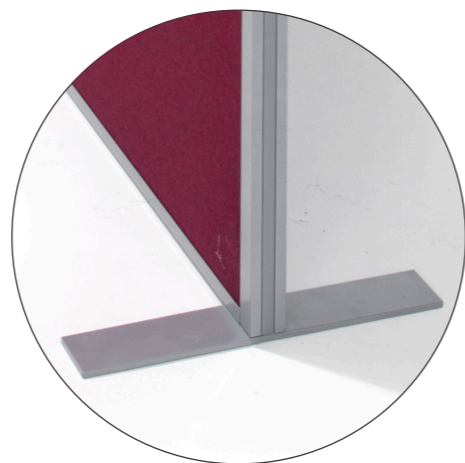
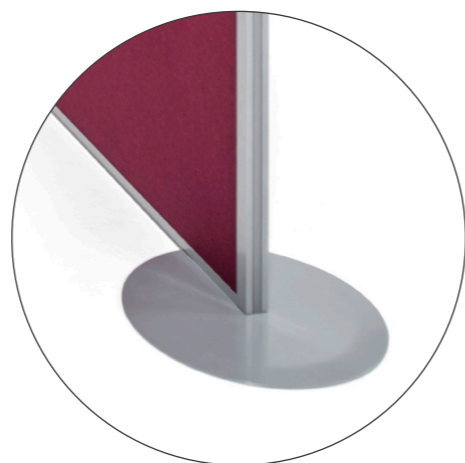
**BORDER**



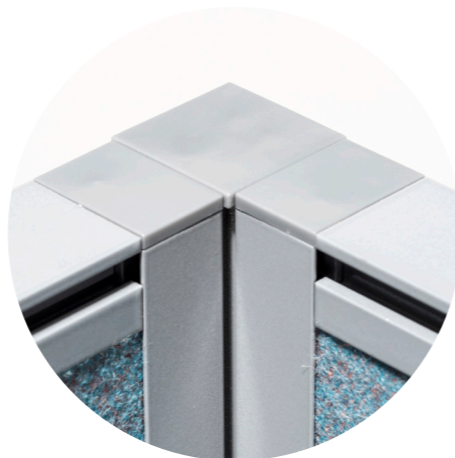
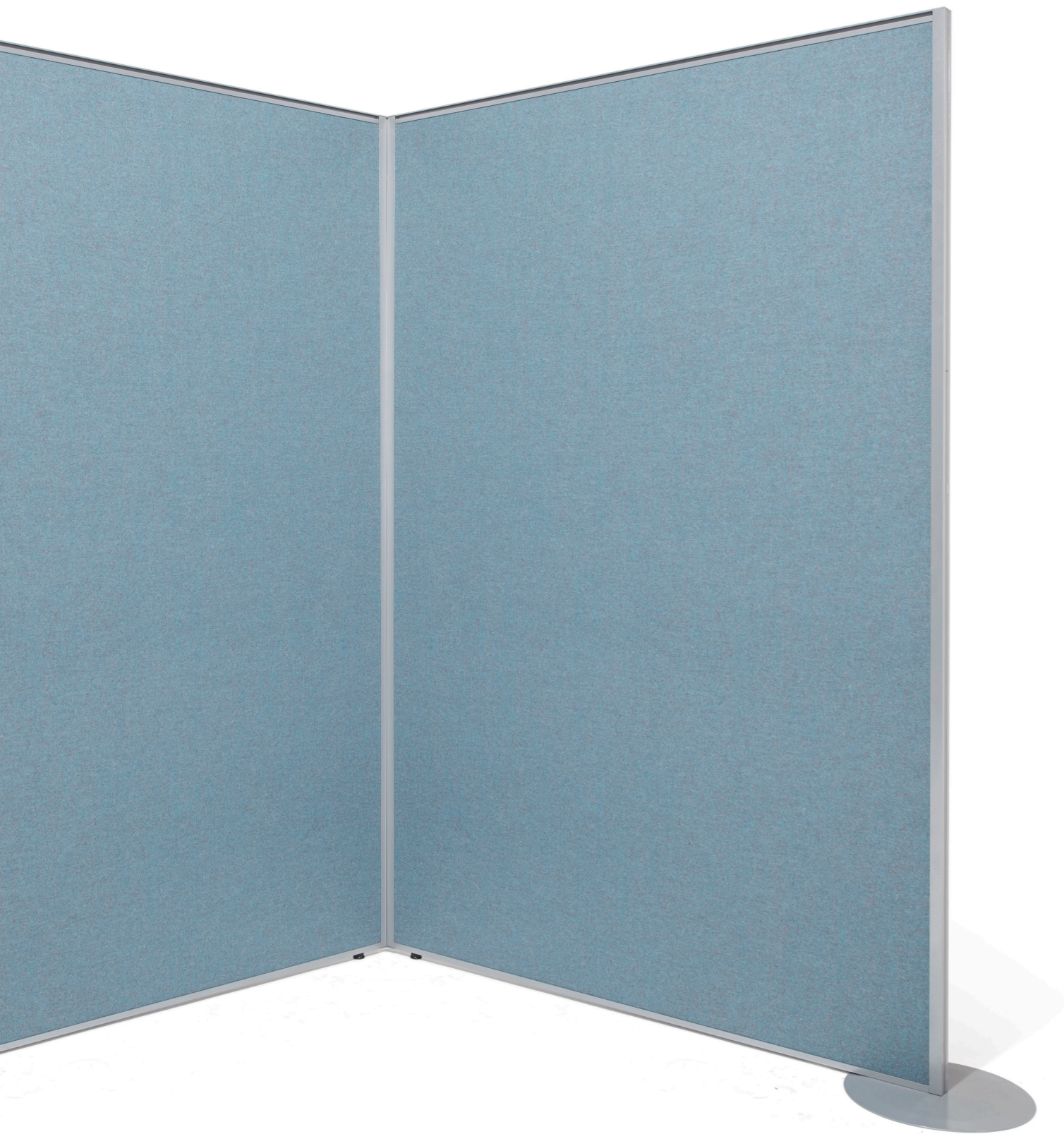
- Top rail includes accessory clip point
- Desk mounted screens supplied with brackets
- Many panel finishes available including fabric, glazing and dry wipe board



**BORDER**



- Desk mounted or free standing available
- Each screen is supplied with two inline links/end trims
- Linking available inline, 2 way/3 way/4 way and 120 degree



**BORDER**

Introducing **DOLLY....**



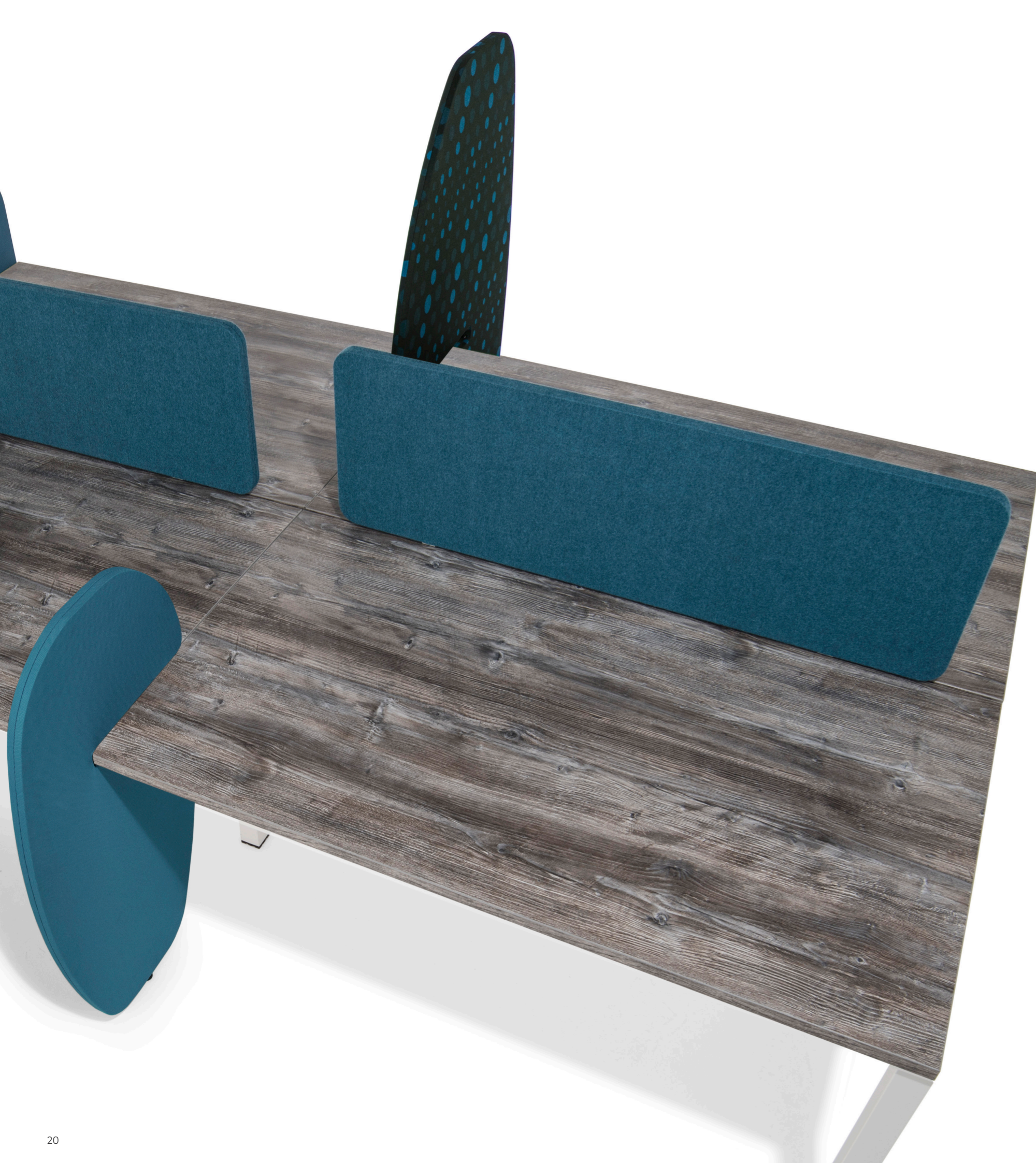
....Contemporary frameless design



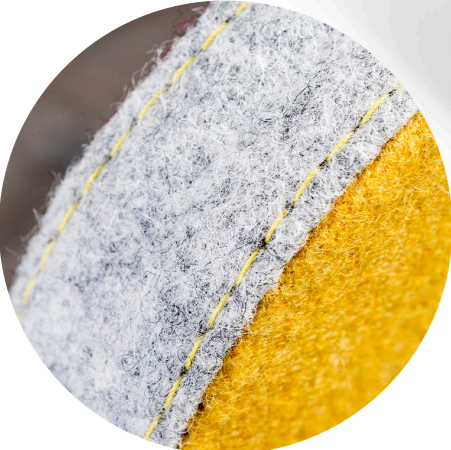
DOLLY



- 28mm thick frameless fabric screen
- Desk mounted screens supplied with brackets



- Desk mounted or free standing available
- 50mm radius corners
- Dolly Stitch available on request



DOLLY STITCH

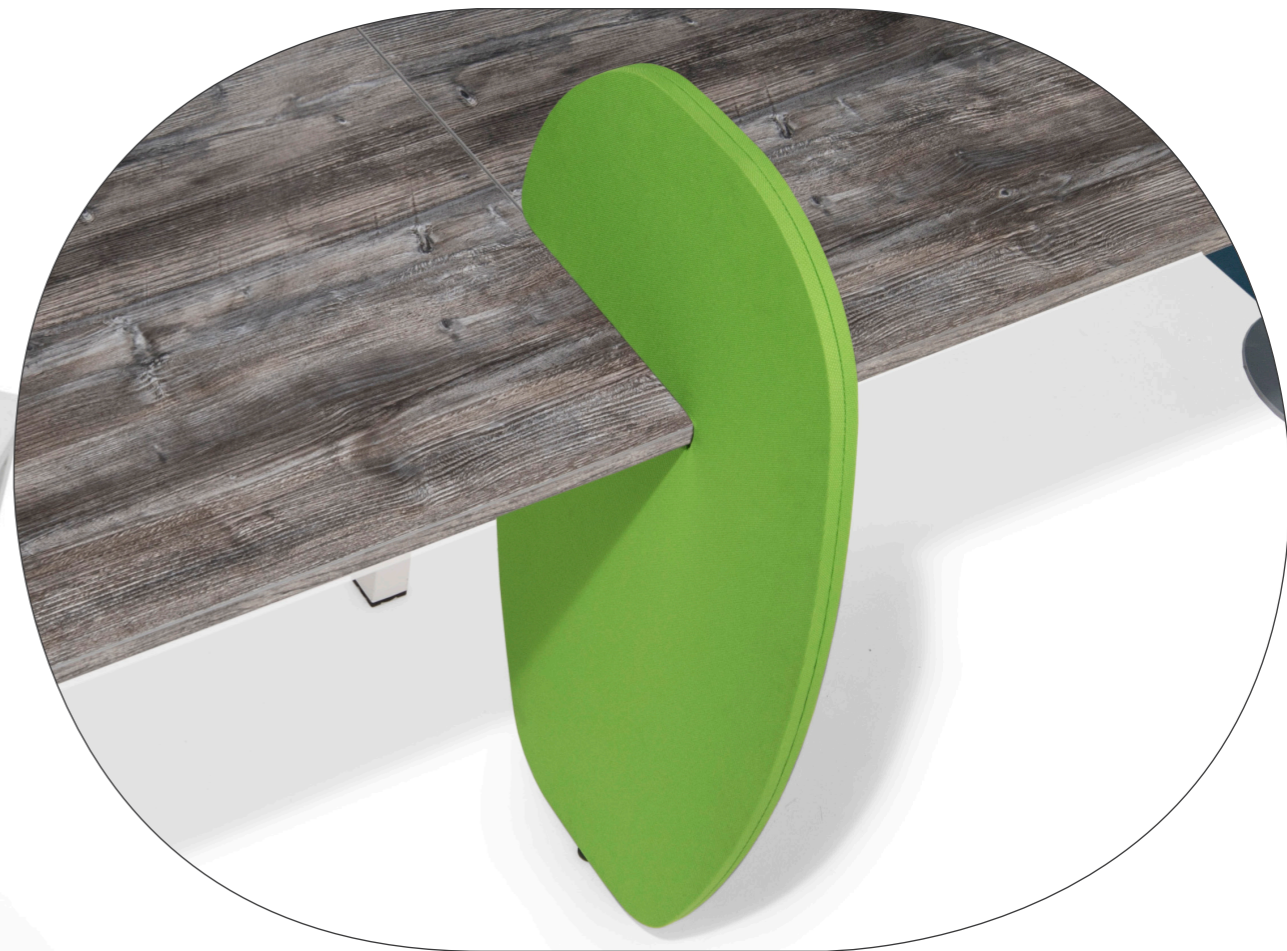
Introducing **WEDGE....**



....Flexible solution for benching



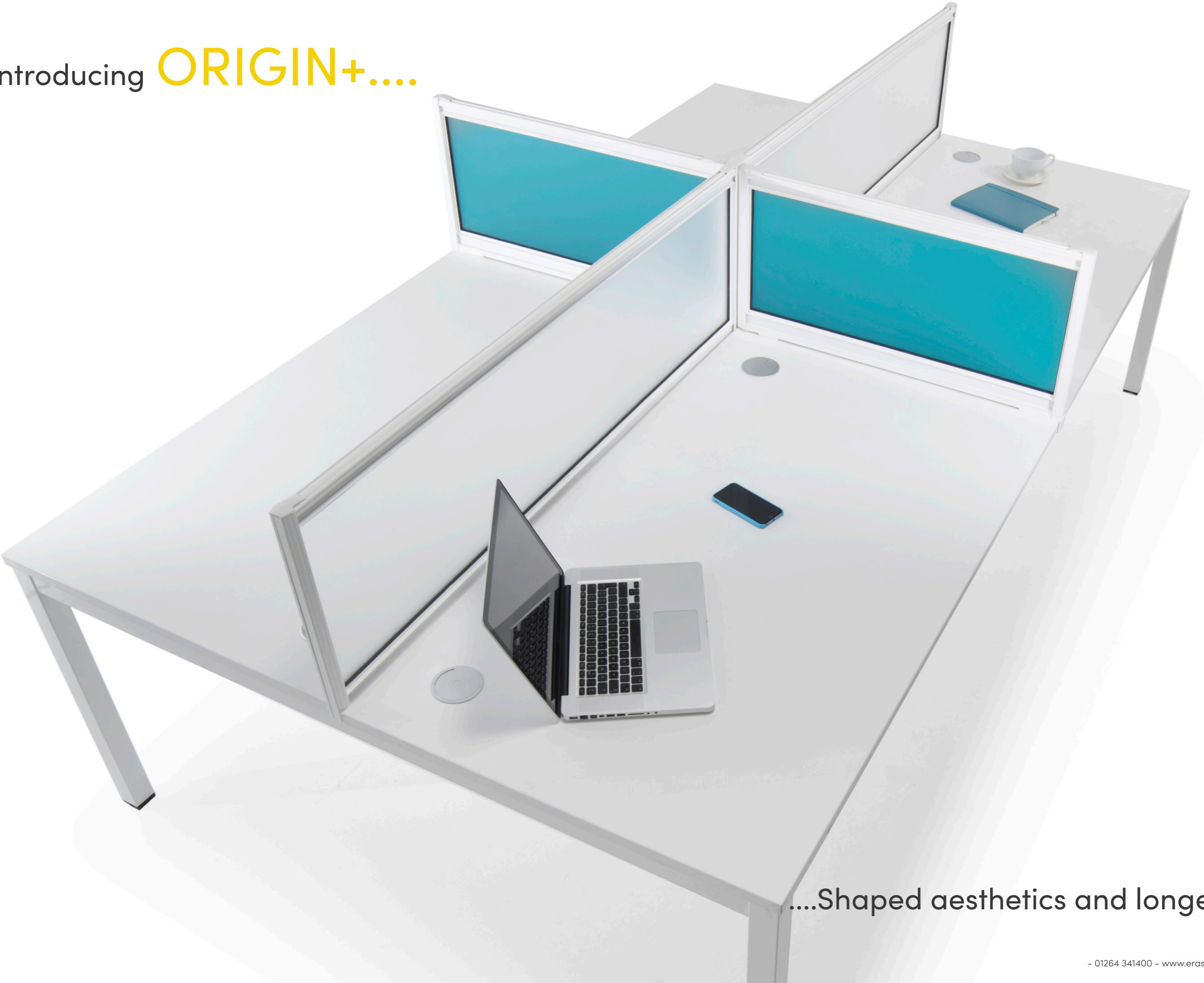
- 28mm thick frameless fabric screen
- Desk mounted or free standing available
- Desk mounted screens supplied with bracket to grip desk top
- Fits to 25mm thick desk tops as standard others available on request





WEDGE

Introducing **ORIGIN+....**



....Shaped aesthetics and longevity



ORIGIN+



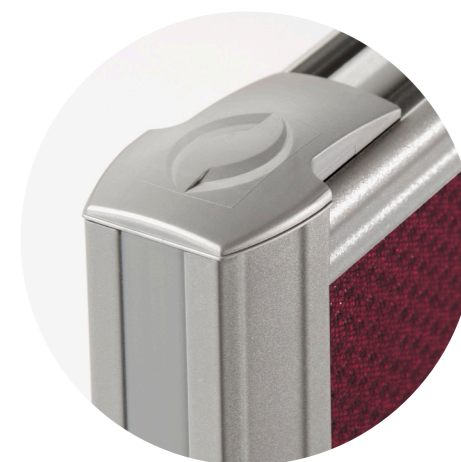
- 33mm thick aluminium framed screen
- Each screen is supplied with two inline links/end trims
- Many panel finishes available including fabric, glazing and dry wipe board



ORIGIN+



- Top rail includes accessory clip point
- Toolrails available
- Desk mounted screens supplied with brackets



ORIGIN+



- Desk mounted or free standing available
- Frame colour available in white or silver
- Linking available inline, 2 way/3 way/4 way and 120 degree



ORIGIN+

Introducing **VIEW....**



....Style and mobility together



VIEW



- 32 or 52mm thick aluminium framed screens
- Supplied with castor feet
- Toolrails available
- Frame colour available in white or silver



- Many panel finishes available including fabric, glazing and dry wipe board
- Differing finishes available on either side of panel



Introducing F50....



....Integrates electrics and High Level Office

5yr



F50

- 52mm thick aluminium framed screen
- Free standing available
- Top rail includes accessory clip point
- Frame colour available in white or silver
- Electric sockets available for power, data and charge
- High Level Office available

Introducing 1 & 2 SERIES....



....Simplicity for defining spaces

- 33mm thick fabric screens
- 1 Series supplied with UPVC side trims
- 2 Series supplied with aluminium side trims
- Desk mounted or free standing available
- Side trim colour available in silver or graphite
- Each screen is supplied with one inline link/ end trim
- Desk mounted screens supplied with brackets
- Linking available inline, 2 way/3 way/4 way



1 & 2 SERIES



era

bespoke – flexible – service

Era Park – Upper Clatford – Hampshire – SP11 7LW

11-12 Great Sutton St. – Clerkenwell – London – EC1V 0BX

t: +44 (0) 1264 341400

f: +44 (0) 1264 341444

e: [sales@erascreens.com](mailto:sales@erascreens.com)