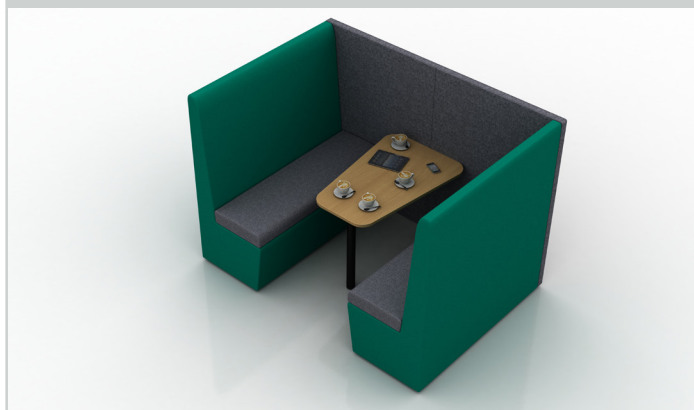


Product Specification/Data Sheet

PRODUCT DETAILS:

Product Name:	Seb
Product Type:	Seating booth
Product Shape:	Straight
Product Code:	SEB/X/XP

PRODUCT IMAGE:



SPECIFICATION:

Consists of a 55mm thick fabric screen.
Booth height available between 1250mm and 1400mm.
Booth width available between 2000mm and 2200mm.
Side trim profile is 17.55mm wide (hidden) extruded from 6063 T6 Tensile strength aluminium.
Side trim profile is epoxy powder coated in Polybond Regal silver metallic gloss epoxy polyester.
Framework horizontal ribs manufactured from 18mm medium density fibreboard (MDF).
Framework vertical posts manufactured from 44mm x 44mm planed square edge (PSE) 5th grade European Redwood (pine).
Framework is covered on each side with 2.5mm medium density fibreboard (MDF) faces.
Panel centre is filled with 25mm thick sound absorbing foam.
Sound absorbing foam is tested to BSEN ISO 354 and has a noise reduction co-efficient (NRC) of 0.55. Technical report ref no: C/23213/T01.
Panel is tested to BSEN ISO 717 and has a rating of 30dB. Technical report ref no: C/22913/T01.
Panel is upholstered (using water based adhesive) in 1mm thick Camira fabric with 2mm laminated foam backing, generally from the Blazer Lite, Synergy or Blazer ranges.
Each panel is supplied with relevant quantity of inline linking strips extruded from 6063 T6 Tensile strength aluminium.
Each panel is supplied with 2/3 x height adjusting feet which provide 35mm of adjustment to allow for uneven floors.
2.5mm, 12mm and 18mm MDF and 44mm PSE is Forest Stewardship Council® (FSC®) certified (FSC-C200033).
A range of accessories are available, including seating, shelving, desk tops, roofs and lighting, name plates, paper trays, pen pots, cable ports, power sockets, dry wipe board and monitor/TV brackets.
Desk tops are typically manufactured from 25mm thick melamine faced chipboard P2 grade standard colour white Egger W980ST2 and edged to match.
Desk mounting brackets are supplied as required and manufactured from mild steel powder coated in RAL 9016 white gloss polyester.
Seat constructed from various timbers, foam and strapping (50mm 60% and 5% stretch webbing) all of which is mechanically fixed and adhered together (using water based adhesive).
Seat construction includes 6mm general foam and 40 and 70mm seating foam.
Seat construction includes 2.5, 9 and 18mm medium density fibreboard (MDF).
Seat construction includes 44mm square planed square edge (PSE) 5th grade European Redwood (pine).
Seat base is covered in 1mm thick black cotton lining cloth.
Seat is upholstered (with multiple double top stitches) in 1mm thick Camira fabric, generally from the Synergy or Blazer ranges.
Seats are supplied with 4-6 seat glides.
On average each panel is manufactured from materials with 37% recycled content.
On average each panel is manufactured from materials with 91% recyclable content.
Screens are packaged with a single polythene bag.

SUPPLIED WITH:

Each panel is supplied with relevant quantity of inline linking strips extruded from 6063 T6 Tensile strength aluminium.
Each panel is supplied with relevant quantity of 16mm diameter x 160mm long dowel vertical linking posts manufactured from 5th grade European Redwood (pine).
Each panel is supplied with 2/3 x height adjusting feet which provide 35mm of adjustment to allow for uneven floors.

CERTIFICATIONS:

Typical Camira fabrics used are Blazer Lite, Synergy or Blazer which have flammability performance as follows, Blazer Lite: BS 476 Part 7 Class 1 (Adhered), BS 476 Part 6 Class 0 (Adhered), EN 13501-1 Adhered Class C, s1, d0. Synergy: EN 1021 - 1 (cigarette), EN 1021 - 2 (match), BS 7176 Low Hazard, NF D 60-013, ÖNORM B 3825 & A 3800-1, (58 kg/m3 CMHR Foam), UNI 9175 Classe 1 IM, EN 13501-1 Adhered Class D, s1, d0, EN 13501-1 Un-adhered Class E, s2, d0. Blazer: same as Synergy plus BS 476 Part 7 Class 1 (Adhered).

Tested by the Furniture Industry Research Association (FIRA) and certified to BSEN 1023 part 1 - report reference 0712/ERAS/06/SA.

Tested by the Furniture Industry Research Association (FIRA) and certified to BSEN 1023 parts 2 & 3 - report reference TREL32922.

Unit 1 Era Park
Upper Clatford
Hampshire
SP11 7LW

First Floor
10 Great Sutton Street
London
EC1V 0BX

t: +44 (0) 1264 341400
f: +44 (0) 1264 341444
e: sales@erascreens.com
w: www.erascreens.com

Company reg no: 04195401
Vat no: 780 7693 87

